

# 10,000 VOICES

CAPTURING THE VOICES OF OVER 10,000 YOUNG  
PEOPLE IN DUMFRIES AND GALLOWAY

*THE LARGEST EVER  
COLLATION OF YOUNG  
PEOPLES VOICES IN  
DUMFRIES AND GALLOWAY*



- 3** Introduction
- 4** Methodology & Considerations
- 5** Place Standards Tool
- 6** Overall Results
  - Results by Ward Area
    - 7** Stranraer & The Rhins
    - 8** Mid Galloway & Wigtown West
    - 9** Dee & Glenkens
    - 10** Castle Douglas & Crocketford
    - 11** Abbey
    - 12** North West Dumfries
    - 13** Mid & Upper Nithsdale
    - 14** Lochar
    - 15** Nith
    - 16** Annandale South
    - 17** Annandale North
    - 18** Annandale East & Eskdale
- 19** Implementing the Findings

10,000 Voices ran in Dumfries and Galloway for the duration of 2018, and is the largest collection of young people's views in the region, with all participants aged between 10 and 25. This is therefore the views of 46.9% of all young people living, working and studying in Dumfries and Galloway, making it the largest collection of young peoples views in Scotland for a single local authority area.

The project sought to gain the perceptions of 10,000 young people of the communities within which they live, this was done through formal consultations, focus groups, events and issue based groups.

The whole project involved young people in every single phase, from its initial planning and development through to the delivery and the subsequent analysis and reporting of the findings.

The information gained from the consultations will be used to inform a new five year strategic plan for Young People's Services, and will provide professionals with an excellent insight into young people's views and priorities for all organisations working with young people across Dumfries and Galloway.



10,000 Voices was conducted as part of a formal consultation process in Primary and Secondary schools from across Dumfries and Galloway. Young people were given a set of questions based upon what age they were, those at Primary were given a version suitable to them, and the same for those at Secondary school, and the age range itself was 10-25.

The formal consultation was also conducted within youth and community group settings across the region. Another method used by staff to gather the appropriate data, was to conduct the survey as part of a focus/issue based group.

By completing the consultation both formally and informally, this gave us the wide variety of views that we required to progress with the project. The data gathered has been split into Ward Areas, in order to allow local Elected Members and other professionals to see what is being presented, and where key issues lie.



10,000 voices was developed for Dumfries and Galloway, using the Scottish Government's Place Standards Tool. The tool lets communities, public agencies, voluntary groups and other organisations find the specific aspects of a place that need to be targeted in order to improve people's health, quality of life and well-being.

The tool provides a simple framework in order to structure conversations about places and communities. It allows us to follow a questionnaire format, and to think about and assess the appropriate issues.

Basing the format of our research on the Place Standards Tool, the questions within 10,000 Voices are based on the two following strands:

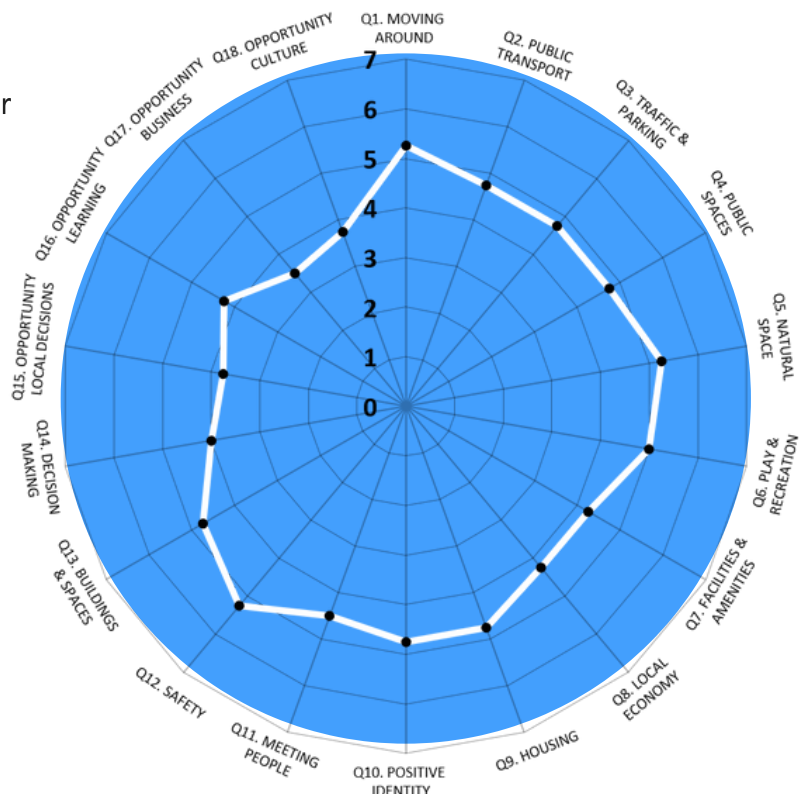
The physical environment: the buildings, streets, public spaces and natural spaces that make up a place.

The social environment: the relationships, social contact and support networks that make up a community.

The tool asks 14 questions on the physical and social elements of a place, which our survey is based upon. We ask questions, and the participant chooses a number from 1-7, 1 means there is a lot of room for improvement, and 7 means there is very little room for improvement, this is taken directly from the Place Standards Tool.

Results have been plotted on diagrams throughout this document, with points closer to the centre representing the ward areas which are most in need of improvement, whilst those plotted closer to the edge of the diagram displaying the strengths.

Utilising the Place Standards Tool for our 10,000 Voices consultation can benefit all new and existing communities, and can also help towards tackling health inequalities.



## TOP 5 ISSUES AFFECTING YOUNG PEOPLE IN DUMFRIES & GALLOWAY

1. BULLYING 2. DIET & BODY IMAGE 3. MENTAL HEALTH 4. SMOKING 5. TRANSPORT

## TOP 5 ISSUES YOUNG PEOPLE WOULD LIKE MORE INFORMATION ON

1. ALCOHOL USE 2. CRIME & LAW 3. DRUG MISUSE 4. EMPLOYMENT 5. TRANSPORT

### THE SURVEY QUESTIONS WERE DEVELOPED USING THE SCOTTISH GOVERNMENT'S PLACE STANDARDS TOOL

#### WHERE YOU LIVE AND YOUR COMMUNITY

AVERAGE SCORE

1 = AWFUL 7 = EXCELLENT

**REGIONAL AVE**

5.25

Q1. I can easily walk and cycle around using good routes

4.75

Q2. Public transport meets my needs

4.75

Q3. Traffic and parking allow people to move around safely and meet the community's needs

4.75

Q4. Buildings, streets and public spaces create an attractive place that is easy to get around

5.25

Q5. I can regularly experience good quality natural space

5

Q6. I can access a range of space with opportunities for play and recreation

4.25

Q7. Facilities and amenities meet my needs

4.25

Q8. There is an active local economy and the opportunity to access good-quality work

4.75

Q9. The homes in my area support the needs of the community

4.75

Q10. This place has a positive identity and I feel I belong

4.5

Q11. There is a range of spaces and opportunities to meet people

5.25

Q12. I feel safe here

4.75

Q13. Buildings and spaces are well cared for

4

Q14. I feel able to take part in decisions and help to change things for the better

#### OPPORTUNITIES IN MY COMMUNITY

AVERAGE SCORE

1 = AWFUL 7 = EXCELLENT

**REGIONAL AVE**

3.75

Q15. Opportunities to meaningfully participate in local service planning and decision making

4.25

Q16. Opportunities to engage in both formal and informal learning that is relevant to you and your needs or interests

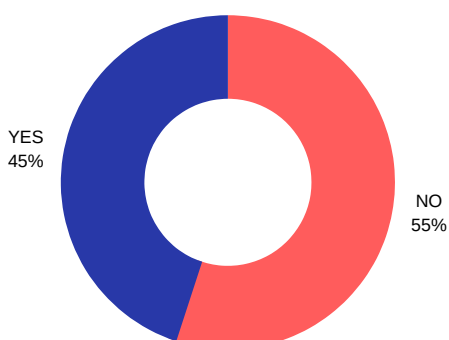
3.5

Q17. Opportunities for young people to develop innovative projects and businesses and work within their local area

3.75

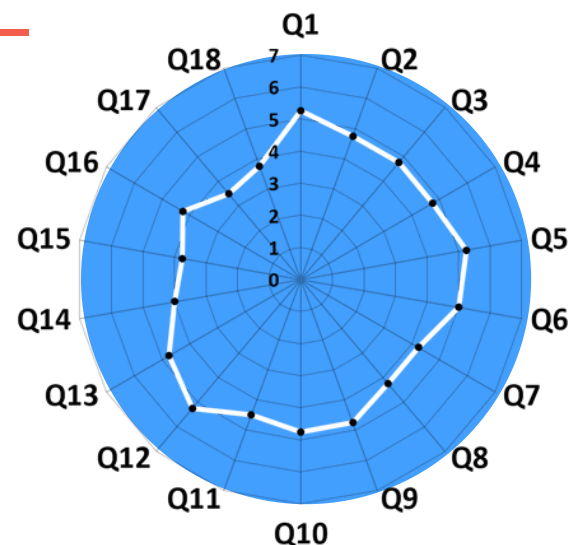
Q18. Opportunities to engage in activities focussed on culture and the arts (performance, production, heritage)

### DO YOU INTEND TO STAY IN DUMFRIES AND GALLOWAY IN THE FUTURE?



### IF YOU DO NOT INTEND TO STAY IN D&G, WHY WOULD YOU LEAVE?

1. TRAVEL
2. STUDY
3. WORK



## TOP 5 ISSUES AFFECTING YOUNG PEOPLE IN THE WARD

1. DISABILITIES 2. LGBTQI+ SUPPORT 3. MENTAL HEALTH 4. SMOKING 5. TRANSPORT

## TOP 5 ISSUES YOUNG PEOPLE WOULD LIKE MORE INFORMATION ON

1. CRIME & THE LAW 2. DOMESTIC ABUSE 3. EMPLOYMENT 4. FAITH/RELIGION 5. WHATS ON IN MY AREA

### THE SURVEY QUESTIONS WERE DEVELOPED USING THE SCOTTISH GOVERNMENTS PLACE STANDARDS TOOL

#### WHERE YOU LIVE AND YOUR COMMUNITY

AVERAGE SCORE

1 = AWFUL 7 = EXCELLENT

REGIONAL AVE	WARD AVE	QUESTION
5.25	5.75	Q1. I can easily walk and cycle around using good routes
4.75	5	Q2. Public transport meets my needs
4.75	4.75	Q3. Traffic and parking allow people to move around safely and meet the community's needs
4.75	5	Q4. Buildings, streets and public spaces create an attractive place that is easy to get around
5.25	4.75	Q5. I can regularly experience good quality natural space
5	5.25	Q6. I can access a range of space with opportunities for play and recreation
4.25	5	Q7. Facilities and amenities meet my needs
4.25	4	Q8. There is an active local economy and the opportunity to access good-quality work
4.75	4.5	Q9. The homes in my area support the needs of the community
4.75	4.75	Q10. This place has a positive identity and I feel I belong
4.5	5	Q11. There is a range of spaces and opportunities to meet people
5.25	5.5	Q12. I feel safe here
4.75	5	Q13. Buildings and spaces are well cared for
4	4.75	Q14. I feel able to take part in decisions and help to change things for the better

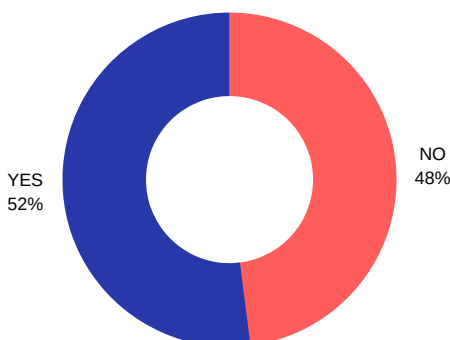
#### OPPORTUNITIES IN MY COMMUNITY

AVERAGE SCORE

1 = AWFUL 7 = EXCELLENT

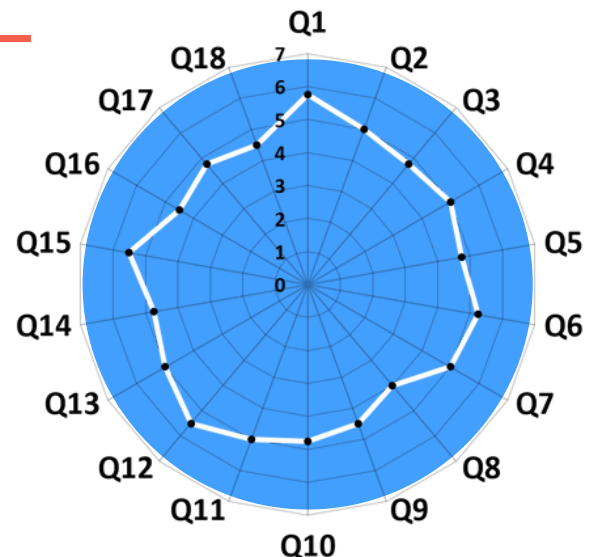
REGIONAL AVE	WARD AVE	QUESTION
3.75	5.5	Q15. Opportunities to meaningfully participate in local service planning and decision making
4.25	4.5	Q16. Opportunities to engage in both formal and informal learning that is relevant to you and your needs or interests
3.5	4.75	Q17. Opportunities for young people to develop innovative projects and businesses and work within their local area
3.75	4.5	Q18. Opportunities to engage in activities focussed on culture and the arts (performance, production, heritage)

### DO YOU INTEND TO STAY IN DUMFRIES AND GALLOWAY IN THE FUTURE?



### IF YOU DO NOT INTEND TO STAY IN D&G, WHY WOULD YOU LEAVE?

1. TRAVEL
2. STUDY
3. WORK



## TOP 5 ISSUES AFFECTING YOUNG PEOPLE IN THE WARD

1. EMPLOYMENT 2. SMOKING 3. TRANSPORT 4. YOUNG PEOPLES RIGHTS 5. WHATS ON IN MY AREA

## TOP 5 ISSUES YOUNG PEOPLE WOULD LIKE MORE INFORMATION ON

1. MONEY 2. DRUG MISUSE 3. DOMESTIC ABUSE 4. DISABILITY 5. BENEFITS & WELFARE

### THE SURVEY QUESTIONS WERE DEVELOPED USING THE SCOTTISH GOVERNMENTS PLACE STANDARDS TOOL

#### WHERE YOU LIVE AND YOUR COMMUNITY

AVERAGE SCORE

1 = AWFUL 7 = EXCELLENT

REGIONAL AVE	WARD AVE	QUESTION
5.25	5.5	Q1. I can easily walk and cycle around using good routes
4.75	5.75	Q2. Public transport meets my needs
4.75	5.75	Q3. Traffic and parking allow people to move around safely and meet the community's needs
4.75	4.75	Q4. Buildings, streets and public spaces create an attractive place that is easy to get around
5.25	4.5	Q5. I can regularly experience good quality natural space
5	4	Q6. I can access a range of space with opportunities for play and recreation
4.25	3.75	Q7. Facilities and amenities meet my needs
4.25	4.75	Q8. There is an active local economy and the opportunity to access good-quality work
4.75	4.75	Q9. The homes in my area support the needs of the community
4.75	5	Q10. This place has a positive identity and I feel I belong
4.5	3.25	Q11. There is a range of spaces and opportunities to meet people
5.25	6	Q12. I feel safe here
4.75	4	Q13. Buildings and spaces are well cared for
4	3	Q14. I feel able to take part in decisions and help to change things for the better

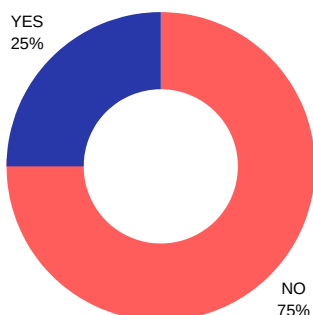
#### OPPORTUNITIES IN MY COMMUNITY

AVERAGE SCORE

1 = AWFUL 7 = EXCELLENT

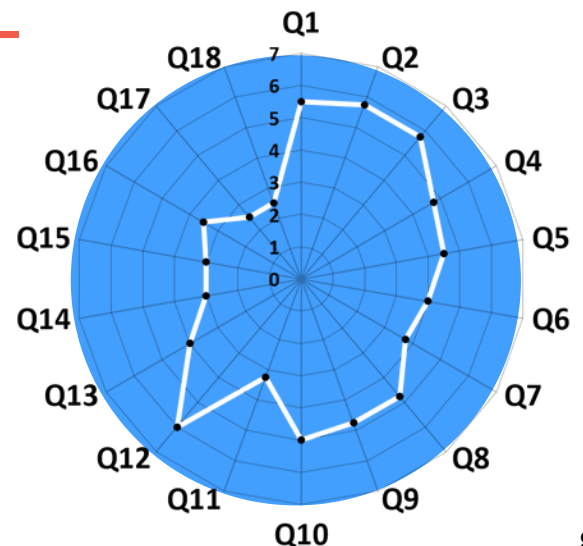
REGIONAL AVE	WARD AVE	QUESTION
3.75	3	Q15. Opportunities to meaningfully participate in local service planning and decision making
4.25	3.5	Q16. Opportunities to engage in both formal and informal learning that is relevant to you and your needs or interests
3.5	2.5	Q17. Opportunities for young people to develop innovative projects and businesses and work within their local area
3.75	2.5	Q18. Opportunities to engage in activities focussed on culture and the arts (performance, production, heritage)

### DO YOU INTEND TO STAY IN DUMFRIES AND GALLOWAY IN THE FUTURE?



### IF YOU DO NOT INTEND TO STAY IN D&G, WHY WOULD YOU LEAVE?

1. STUDY
2. TRAVEL
3. WORK





## TOP 5 ISSUES AFFECTING YOUNG PEOPLE IN THE WARD

1. DIET & BODY IMAGE 2. EMPLOYMENT 3. MENTAL HEALTH 4. PREGNANCY 5. YOUNG PEOPLES RIGHTS

## TOP 5 ISSUES YOUNG PEOPLE WOULD LIKE MORE INFORMATION ON

1. HOUSING & ACCOMMODATION 2. MONEY 3. TRANSPORT 4. WHATS ON IN MY AREA 5. BENEFITS

### THE SURVEY QUESTIONS WERE DEVELOPED USING THE SCOTTISH GOVERNMENTS PLACE STANDARDS TOOL

#### WHERE YOU LIVE AND YOUR COMMUNITY

AVERAGE SCORE

1 = AWFUL 7 = EXCELLENT

REGIONAL AVE	WARD AVE	QUESTION
5.25	5.25	Q1. I can easily walk and cycle around using good routes
4.75	2.75	Q2. Public transport meets my needs
4.75	4.25	Q3. Traffic and parking allow people to move around safely and meet the community's needs
4.75	5.5	Q4. Buildings, streets and public spaces create an attractive place that is easy to get around
5.25	6	Q5. I can regularly experience good quality natural space
5	5.75	Q6. I can access a range of space with opportunities for play and recreation
4.25	5	Q7. Facilities and amenities meet my needs
4.25	2.75	Q8. There is an active local economy and the opportunity to access good-quality work
4.75	4.5	Q9. The homes in my area support the needs of the community
4.75	5.25	Q10. This place has a positive identity and I feel I belong
4.5	3.75	Q11. There is a range of spaces and opportunities to meet people
5.25	5.5	Q12. I feel safe here
4.75	5	Q13. Buildings and spaces are well cared for
4	3.5	Q14. I feel able to take part in decisions and help to change things for the better

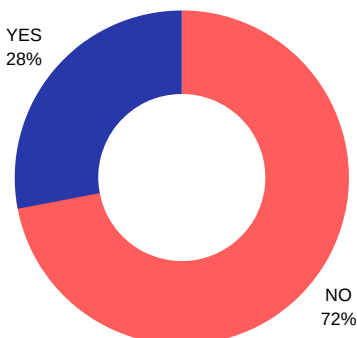
#### OPPORTUNITIES IN MY COMMUNITY

AVERAGE SCORE

1 = AWFUL 7 = EXCELLENT

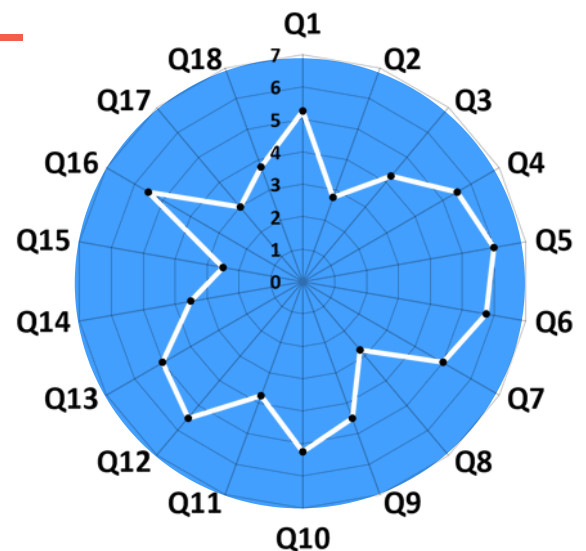
REGIONAL AVE	WARD AVE	QUESTION
3.75	2.5	Q15. Opportunities to meaningfully participate in local service planning and decision making
4.25	5.5	Q16. Opportunities to engage in both formal and informal learning that is relevant to you and your needs or interests
3.5	3	Q17. Opportunities for young people to develop innovative projects and businesses and work within their local area
3.75	3.75	Q18. Opportunities to engage in activities focussed on culture and the arts (performance, production, heritage)

### DO YOU INTEND TO STAY IN DUMFRIES AND GALLOWAY IN THE FUTURE?



### IF YOU DO NOT INTEND TO STAY IN D&G, WHY WOULD YOU LEAVE?

1. STUDY
2. TRAVEL
3. WORK



## TOP 5 ISSUES AFFECTING YOUNG PEOPLE IN THE WARD

1. BULLYING 2. PREGNANCY 3. SEXUAL HEALTH 4. TRANSPORT 5. WHAT'S ON IN MY AREA

## TOP 5 ISSUES YOUNG PEOPLE WOULD LIKE MORE INFORMATION ON

1. ALCOHOL USE 2. CRIME & LAW 3. LGBTQI+ 4. SEXTING & PORNOGRAPHY 5. YOUNG PEOPLES RIGHTS

### THE SURVEY QUESTIONS WERE DEVELOPED USING THE SCOTTISH GOVERNMENTS PLACE STANDARDS TOOL

#### WHERE YOU LIVE AND YOUR COMMUNITY

AVERAGE SCORE

1 = AWFUL 7 = EXCELLENT

REGIONAL AVE	WARD AVE	QUESTION
5.25	6.75	Q1. I can easily walk and cycle around using good routes
4.75	6	Q2. Public transport meets my needs
4.75	3.5	Q3. Traffic and parking allow people to move around safely and meet the community's needs
4.75	5.75	Q4. Buildings, streets and public spaces create an attractive place that is easy to get around
5.25	6	Q5. I can regularly experience good quality natural space
5	6.25	Q6. I can access a range of space with opportunities for play and recreation
4.25	6	Q7. Facilities and amenities meet my needs
4.25	6	Q8. There is an active local economy and the opportunity to access good-quality work
4.75	6.75	Q9. The homes in my area support the needs of the community
4.75	5.25	Q10. This place has a positive identity and I feel I belong
4.5	6	Q11. There is a range of spaces and opportunities to meet people
5.25	5	Q12. I feel safe here
4.75	5.25	Q13. Buildings and spaces are well cared for
4	3.5	Q14. I feel able to take part in decisions and help to change things for the better

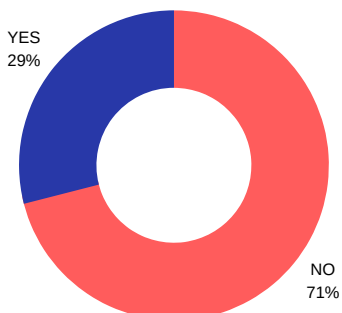
#### OPPORTUNITIES IN MY COMMUNITY

AVERAGE SCORE

1 = AWFUL 7 = EXCELLENT

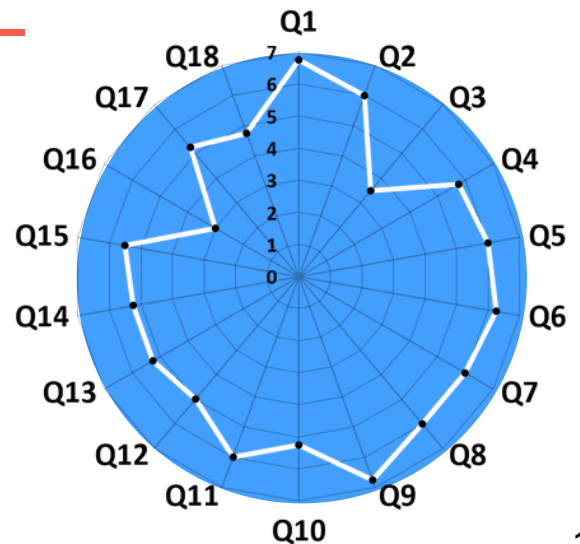
REGIONAL AVE	WARD AVE	QUESTION
3.75	5.5	Q15. Opportunities to meaningfully participate in local service planning and decision making
4.25	3	Q16. Opportunities to engage in both formal and informal learning that is relevant to you and your needs or interests
3.5	5.25	Q17. Opportunities for young people to develop innovative projects and businesses and work within their local area
3.75	4.75	Q18. Opportunities to engage in activities focussed on culture and the arts (performance, production, heritage)

### DO YOU INTEND TO STAY IN DUMFRIES AND GALLOWAY IN THE FUTURE?



### IF YOU DO NOT INTEND TO STAY IN D&G, WHY WOULD YOU LEAVE?

1. TRAVEL
2. WORK
3. STUDY



## TOP 5 ISSUES AFFECTING YOUNG PEOPLE IN THE WARD

1. BULLYING 2. PREGNANCY 3. SEXUAL HEALTH 4. TRANSPORT 5. WHATS ON IN MY AREA

## TOP 5 ISSUES YOUNG PEOPLE WOULD LIKE MORE INFORMATION ON

1. ALCOHOL USE 2. CRIME 3. LGBTQI+ 4. SEXTING & PORNOGRAPHY 5. YOUNG PEOPLES RIGHTS

### THE SURVEY QUESTIONS WERE DEVELOPED USING THE SCOTTISH GOVERNMENTS PLACE STANDARDS TOOL

#### WHERE YOU LIVE AND YOUR COMMUNITY

AVERAGE SCORE

1 = AWFUL 7 = EXCELLENT

REGIONAL AVE	WARD AVE	QUESTION
5.25	5.25	Q1. I can easily walk and cycle around using good routes
4.75	4.75	Q2. Public transport meets my needs
4.75	5.25	Q3. Traffic and parking allow people to move around safely and meet the community's needs
4.75	4	Q4. Buildings, streets and public spaces create an attractive place that is easy to get around
5.25	4.5	Q5. I can regularly experience good quality natural space
5	4.25	Q6. I can access a range of space with opportunities for play and recreation
4.25	4.5	Q7. Facilities and amenities meet my needs
4.25	5	Q8. There is an active local economy and the opportunity to access good-quality work
4.75	4.75	Q9. The homes in my area support the needs of the community
4.75	4.5	Q10. This place has a positive identity and I feel I belong
4.5	4.75	Q11. There is a range of spaces and opportunities to meet people
5.25	3.75	Q12. I feel safe here
4.75	4.25	Q13. Buildings and spaces are well cared for
4	4	Q14. I feel able to take part in decisions and help to change things for the better

#### OPPORTUNITIES IN MY COMMUNITY

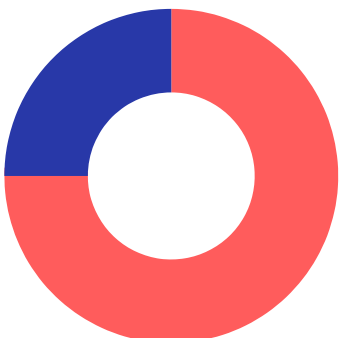
AVERAGE SCORE

1 = AWFUL 7 = EXCELLENT

REGIONAL AVE	WARD AVE	QUESTION
3.75	4.75	Q15. Opportunities to meaningfully participate in local service planning and decision making
4.25	5.75	Q16. Opportunities to engage in both formal and informal learning that is relevant to you and your needs or interests
3.5	2.5	Q17. Opportunities for young people to develop innovative projects and businesses and work within their local area
3.75	2.5	Q18. Opportunities to engage in activities focussed on culture and the arts (performance, production, heritage)

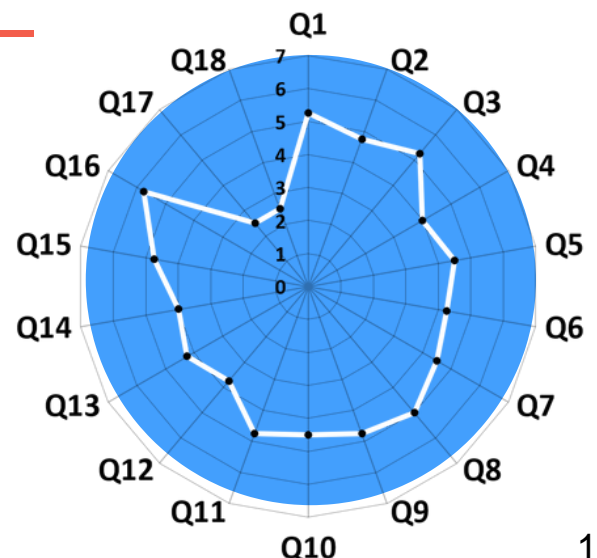
### DO YOU INTEND TO STAY IN DUMFRIES AND GALLOWAY IN THE FUTURE?

YES  
25%



### IF YOU DO NOT INTEND TO STAY IN D&G, WHY WOULD YOU LEAVE?

1. TRAVEL
2. WORK
3. STUDY



## TOP 5 ISSUES AFFECTING YOUNG PEOPLE IN THE WARD

1. BULLYING
2. PREGNANCY
3. SEXUAL HEALTH
4. TRANSPORT
5. WHATS ON IN MY AREA

## TOP 5 ISSUES YOUNG PEOPLE WOULD LIKE MORE INFORMATION ON

1. ALCOHOL USE
2. CRIME
3. LGBTQI+
4. SEXTING & PORNOGRAPHY
5. YOUNG PEOPLES RIGHTS

### THE SURVEY QUESTIONS WERE DEVELOPED USING THE SCOTTISH GOVERNMENTS PLACE STANDARDS TOOL WHERE YOU LIVE AND YOUR COMMUNITY

AVERAGE SCORE

1 = AWFUL 7 = EXCELLENT

REGIONAL AVE	WARD AVE	QUESTION
5.25	4.75	Q1. I can easily walk and cycle around using good routes
4.75	5.75	Q2. Public transport meets my needs
4.75	5.5	Q3. Traffic and parking allow people to move around safely and meet the community's needs
4.75	5.75	Q4. Buildings, streets and public spaces create an attractive place that is easy to get around
5.25	6.25	Q5. I can regularly experience good quality natural space
5	6.25	Q6. I can access a range of space with opportunities for play and recreation
4.25	4.25	Q7. Facilities and amenities meet my needs
4.25	5.5	Q8. There is an active local economy and the opportunity to access good-quality work
4.75	5.25	Q9. The homes in my area support the needs of the community
4.75	4.25	Q10. This place has a positive identity and I feel I belong
4.5	4.75	Q11. There is a range of spaces and opportunities to meet people
5.25	4.75	Q12. I feel safe here
4.75	5.75	Q13. Buildings and spaces are well cared for
4	6.25	Q14. I feel able to take part in decisions and help to change things for the better

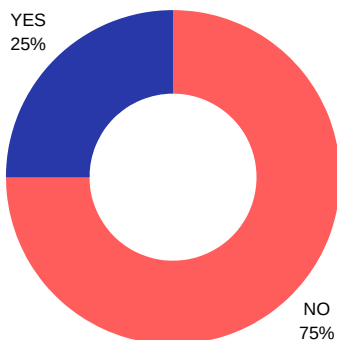
### OPPORTUNITIES IN MY COMMUNITY

AVERAGE SCORE

1 = AWFUL 7 = EXCELLENT

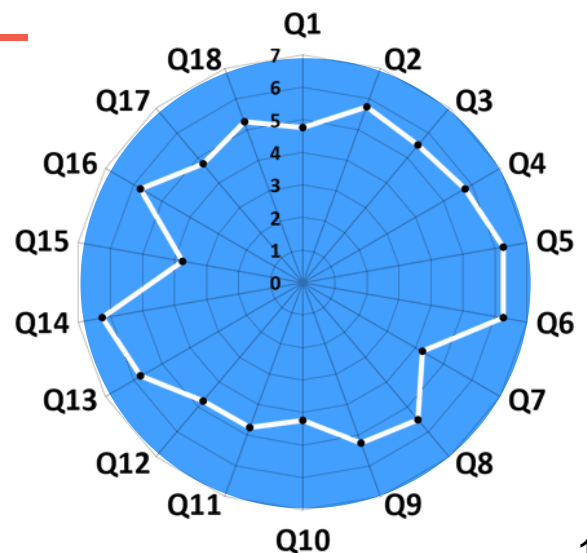
REGIONAL AVE	WARD AVE	QUESTION
3.75	3.75	Q15. Opportunities to meaningfully participate in local service planning and decision making
4.25	5.75	Q16. Opportunities to engage in both formal and informal learning that is relevant to you and your needs or interests
3.5	4.75	Q17. Opportunities for young people to develop innovative projects and businesses and work within their local area
3.75	5.25	Q18. Opportunities to engage in activities focussed on culture and the arts (performance, production, heritage)

### DO YOU INTEND TO STAY IN DUMFRIES AND GALLOWAY IN THE FUTURE?



### IF YOU DO NOT INTEND TO STAY IN D&G, WHY WOULD YOU LEAVE?

1. TRAVEL
2. WORK
- STUDY



## TOP 5 ISSUES AFFECTING YOUNG PEOPLE IN THE WARD

1. BENEFITS 2. BULLYING 3. DIET & BODY IMAGE 4. DRUG MISUSE 5. MENTAL HEALTH

## TOP 5 ISSUES YOUNG PEOPLE WOULD LIKE MORE INFORMATION ON

1. ALCOHOL USE 2. DISABILITIES 3. DRUG MISUSE 4. SEXTING & PORNOGRAPHY 5. TRANSPORT

### THE SURVEY QUESTIONS WERE DEVELOPED USING THE SCOTTISH GOVERNMENTS PLACE STANDARDS TOOL

#### WHERE YOU LIVE AND YOUR COMMUNITY

AVERAGE SCORE

1 = AWFUL 7 = EXCELLENT

REGIONAL AVE	WARD AVE	QUESTION
5.25	4.75	Q1. I can easily walk and cycle around using good routes
4.75	4	Q2. Public transport meets my needs
4.75	4	Q3. Traffic and parking allow people to move around safely and meet the community's needs
4.75	3.75	Q4. Buildings, streets and public spaces create an attractive place that is easy to get around
5.25	6	Q5. I can regularly experience good quality natural space
5	4.25	Q6. I can access a range of space with opportunities for play and recreation
4.25	4.25	Q7. Facilities and amenities meet my needs
4.25	3.75	Q8. There is an active local economy and the opportunity to access good-quality work
4.75	4	Q9. The homes in my area support the needs of the community
4.75	4.25	Q10. This place has a positive identity and I feel I belong
4.5	3.75	Q11. There is a range of spaces and opportunities to meet people
5.25	4.5	Q12. I feel safe here
4.75	3.5	Q13. Buildings and spaces are well cared for
4	3.5	Q14. I feel able to take part in decisions and help to change things for the better

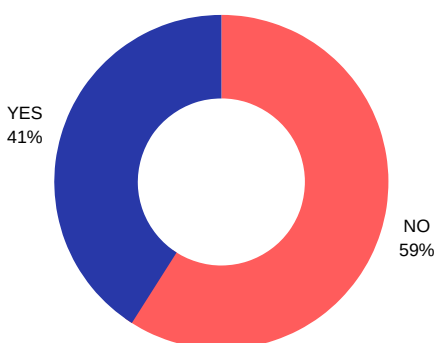
#### OPPORTUNITIES IN MY COMMUNITY

AVERAGE SCORE

1 = AWFUL 7 = EXCELLENT

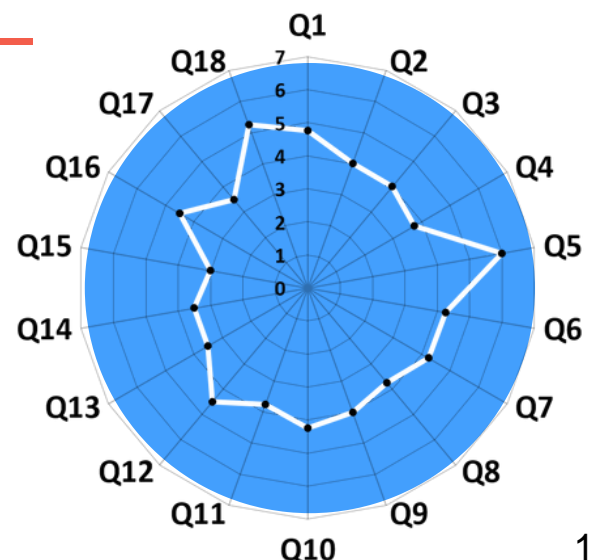
REGIONAL AVE	WARD AVE	QUESTION
3.75	3	Q15. Opportunities to meaningfully participate in local service planning and decision making
4.25	4.5	Q16. Opportunities to engage in both formal and informal learning that is relevant to you and your needs or interests
3.5	3.5	Q17. Opportunities for young people to develop innovative projects and businesses and work within their local area
3.75	5.25	Q18. Opportunities to engage in activities focussed on culture and the arts (performance, production, heritage)

### DO YOU INTEND TO STAY IN DUMFRIES AND GALLOWAY IN THE FUTURE?



### IF YOU DO NOT INTEND TO STAY IN D&G, WHY WOULD YOU LEAVE?

1. STUDY
2. WORK
3. TRAVEL



## TOP 5 ISSUES AFFECTING YOUNG PEOPLE IN THE WARD

1. ALCOHOL USE 2. BENEFITS & WELFARE 3. BULLYING 4. DIET & BODY IMAGE 5. DRUG MISUSE

## TOP 5 ISSUES YOUNG PEOPLE WOULD LIKE MORE INFORMATION ON

1. CHILDCARE 2. DISABILITIES 3. EMPLOYMENT 4. GAMBLING 5. TRANSPORT

### THE SURVEY QUESTIONS WERE DEVELOPED USING THE SCOTTISH GOVERNMENTS PLACE STANDARDS TOOL

#### WHERE YOU LIVE AND YOUR COMMUNITY

AVERAGE SCORE

1 = AWFUL 7 = EXCELLENT

REGIONAL AVE	WARD AVE	QUESTION
5.25	4.5	Q1. I can easily walk and cycle around using good routes
4.75	4.75	Q2. Public transport meets my needs
4.75	4.75	Q3. Traffic and parking allow people to move around safely and meet the community's needs
4.75	4	Q4. Buildings, streets and public spaces create an attractive place that is easy to get around
5.25	5.5	Q5. I can regularly experience good quality natural space
5	5.75	Q6. I can access a range of space with opportunities for play and recreation
4.25	4.25	Q7. Facilities and amenities meet my needs
4.25	5.25	Q8. There is an active local economy and the opportunity to access good-quality work
4.75	4	Q9. The homes in my area support the needs of the community
4.75	4.75	Q10. This place has a positive identity and I feel I belong
4.5	3.25	Q11. There is a range of spaces and opportunities to meet people
5.25	6.5	Q12. I feel safe here
4.75	4.5	Q13. Buildings and spaces are well cared for
4	4.25	Q14. I feel able to take part in decisions and help to change things for the better

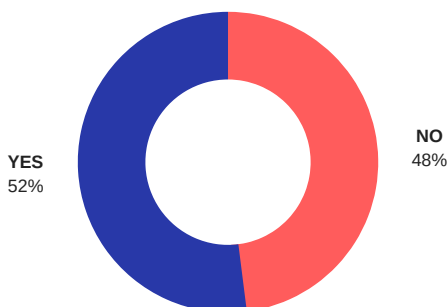
#### OPPORTUNITIES IN MY COMMUNITY

AVERAGE SCORE

1 = AWFUL 7 = EXCELLENT

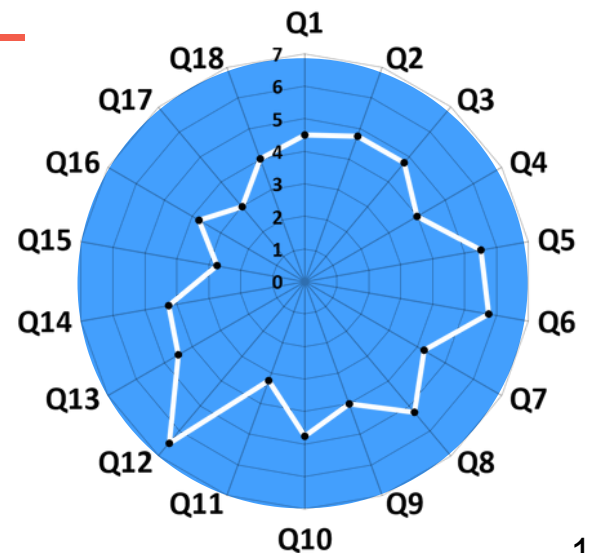
REGIONAL AVE	WARD AVE	QUESTION
3.75	2.75	Q15. Opportunities to meaningfully participate in local service planning and decision making
4.25	3.75	Q16. Opportunities to engage in both formal and informal learning that is relevant to you and your needs or interests
3.5	3	Q17. Opportunities for young people to develop innovative projects and businesses and work within their local area
3.75	4	Q18. Opportunities to engage in activities focussed on culture and the arts (performance, production, heritage)

### DO YOU INTEND TO STAY IN DUMFRIES AND GALLOWAY IN THE FUTURE?



### IF YOU DO NOT INTEND TO STAY IN D&G, WHY WOULD YOU LEAVE?

1. TRAVEL
2. STUDY
3. WORK



## TOP 5 ISSUES AFFECTING YOUNG PEOPLE IN THE WARD

1. BULLYING 2. DRUG MISUSE 3. MENTAL HEALTH 4. SEXTING & PORNOGRAPHY 5. SMOKING

## TOP 5 ISSUES YOUNG PEOPLE WOULD LIKE MORE INFORMATION ON

1. ALCOHOL USE 2. DIET & BODY IMAGE 3. DISABILITIES 4. EMPLOYMENT 5. SMOKING

### THE SURVEY QUESTIONS WERE DEVELOPED USING THE SCOTTISH GOVERNMENTS PLACE STANDARDS TOOL

#### WHERE YOU LIVE AND YOUR COMMUNITY

AVERAGE SCORE

1 = AWFUL 7 = EXCELLENT

REGIONAL AVE	WARD AVE	QUESTION
5.25	4.75	Q1. I can easily walk and cycle around using good routes
4.75	5	Q2. Public transport meets my needs
4.75	5.25	Q3. Traffic and parking allow people to move around safely and meet the community's needs
4.75	5.25	Q4. Buildings, streets and public spaces create an attractive place that is easy to get around
5.25	6	Q5. I can regularly experience good quality natural space
5	5.5	Q6. I can access a range of space with opportunities for play and recreation
4.25	4.75	Q7. Facilities and amenities meet my needs
4.25	4.5	Q8. There is an active local economy and the opportunity to access good-quality work
4.75	5.75	Q9. The homes in my area support the needs of the community
4.75	6.25	Q10. This place has a positive identity and I feel I belong
4.5	6.5	Q11. There is a range of spaces and opportunities to meet people
5.25	6	Q12. I feel safe here
4.75	4.5	Q13. Buildings and spaces are well cared for
4	5.25	Q14. I feel able to take part in decisions and help to change things for the better

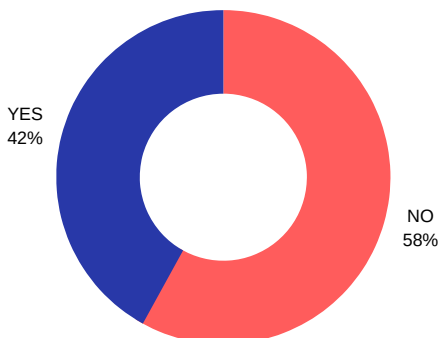
#### OPPORTUNITIES IN MY COMMUNITY

AVERAGE SCORE

1 = AWFUL 7 = EXCELLENT

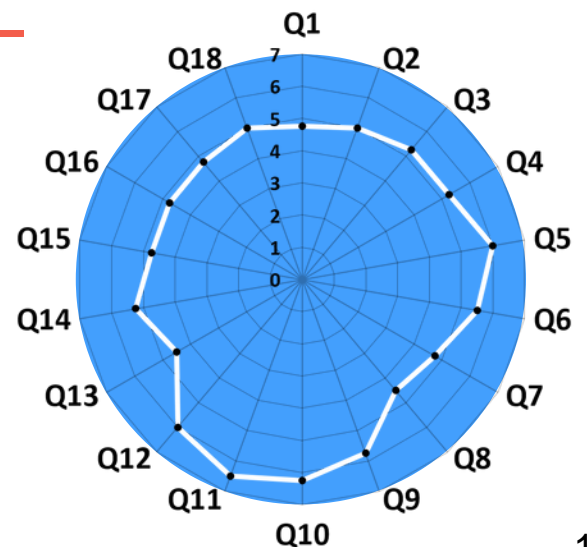
REGIONAL AVE	WARD AVE	QUESTION
3.75	4.75	Q15. Opportunities to meaningfully participate in local service planning and decision making
4.25	4.75	Q16. Opportunities to engage in both formal and informal learning that is relevant to you and your needs or interests
3.5	4.75	Q17. Opportunities for young people to develop innovative projects and businesses and work within their local area
3.75	5	Q18. Opportunities to engage in activities focussed on culture and the arts (performance, production, heritage)

### DO YOU INTEND TO STAY IN DUMFRIES AND GALLOWAY IN THE FUTURE?



### IF YOU DO NOT INTEND TO STAY IN D&G, WHY WOULD YOU LEAVE?

1. STUDY
2. TRAVEL
3. WORK



## TOP 5 ISSUES AFFECTING YOUNG PEOPLE IN THE WARD

1. BULLYING 2. DIET & BODY IMAGE 3. LGBTQI+ 4. MENTAL HEALTH 5. SMOKING

## TOP 5 ISSUES YOUNG PEOPLE WOULD LIKE MORE INFORMATION ON

1. ALCOHOL USE 2. CRIME & LAW 3. DRUG MISUSE 4. SMOKING 5. TRANSPORT

### THE SURVEY QUESTIONS WERE DEVELOPED USING THE SCOTTISH GOVERNMENTS PLACE STANDARDS TOOL

#### WHERE YOU LIVE AND YOUR COMMUNITY

AVERAGE SCORE

1 = AWFUL 7 = EXCELLENT

REGIONAL AVE	WARD AVE	QUESTION
5.25	5.75	Q1. I can easily walk and cycle around using good routes
4.75	4.75	Q2. Public transport meets my needs
4.75	5.25	Q3. Traffic and parking allow people to move around safely and meet the community's needs
4.75	3.75	Q4. Buildings, streets and public spaces create an attractive place that is easy to get around
5.25	5	Q5. I can regularly experience good quality natural space
5	3.25	Q6. I can access a range of space with opportunities for play and recreation
4.25	3.25	Q7. Facilities and amenities meet my needs
4.25	3	Q8. There is an active local economy and the opportunity to access good-quality work
4.75	3.75	Q9. The homes in my area support the needs of the community
4.75	3	Q10. This place has a positive identity and I feel I belong
4.5	3.75	Q11. There is a range of spaces and opportunities to meet people
5.25	5.5	Q12. I feel safe here
4.75	4.5	Q13. Buildings and spaces are well cared for
4	3.25	Q14. I feel able to take part in decisions and help to change things for the better

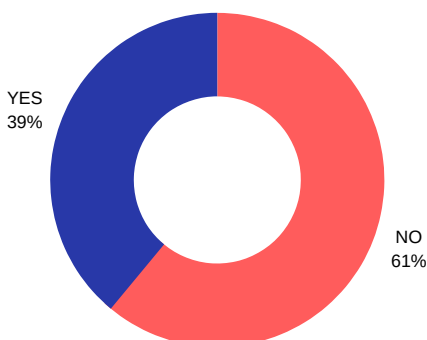
#### OPPORTUNITIES IN MY COMMUNITY

AVERAGE SCORE

1 = AWFUL 7 = EXCELLENT

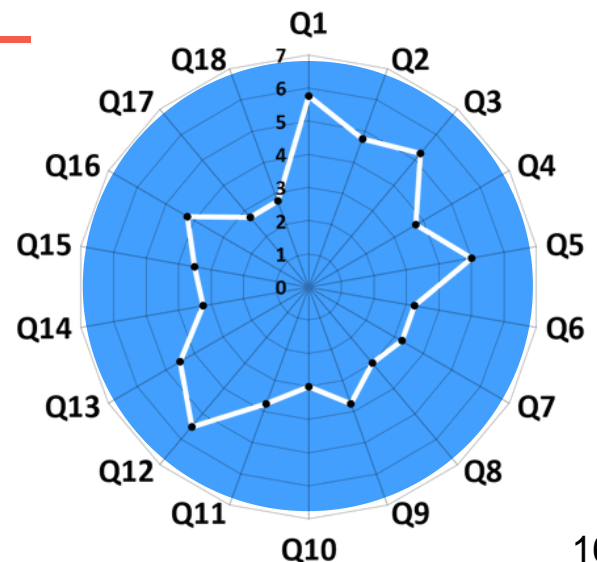
REGIONAL AVE	WARD AVE	QUESTION
3.75	3.5	Q15. Opportunities to meaningfully participate in local service planning and decision making
4.25	4.25	Q16. Opportunities to engage in both formal and informal learning that is relevant to you and your needs or interests
3.5	2.75	Q17. Opportunities for young people to develop innovative projects and businesses and work within their local area
3.75	2.75	Q18. Opportunities to engage in activities focussed on culture and the arts (performance, production, heritage)

### DO YOU INTEND TO STAY IN DUMFRIES AND GALLOWAY IN THE FUTURE?



### IF YOU DO NOT INTEND TO STAY IN D&G, WHY WOULD YOU LEAVE?

1. WORK
2. STUDY
3. TRAVEL





## TOP 5 ISSUES AFFECTING YOUNG PEOPLE IN THE WARD

1. ALCOHOL USE 2. BULLYING 3. DIET & BODY IMAGE 4. MENTAL HEALTH 5. SMOKING

## TOP 5 ISSUES YOUNG PEOPLE WOULD LIKE MORE INFORMATION ON

1. DRUG MISUSE 2. CRIME & LAW 3. EMPLOYMENT 4. MENTAL HEALTH 5. TRANSPORT

### THE SURVEY QUESTIONS WERE DEVELOPED USING THE SCOTTISH GOVERNMENT'S PLACE STANDARDS TOOL

#### WHERE YOU LIVE AND YOUR COMMUNITY

AVERAGE SCORE

1 = AWFUL 7 = EXCELLENT

REGIONAL AVE	WARD AVE	QUESTION
5.25	5.5	Q1. I can easily walk and cycle around using good routes
4.75	3.75	Q2. Public transport meets my needs
4.75	4.75	Q3. Traffic and parking allow people to move around safely and meet the community's needs
4.75	4	Q4. Buildings, streets and public spaces create an attractive place that is easy to get around
5.25	4.75	Q5. I can regularly experience good quality natural space
5	3.25	Q6. I can access a range of space with opportunities for play and recreation
4.25	3.25	Q7. Facilities and amenities meet my needs
4.25	2.5	Q8. There is an active local economy and the opportunity to access good-quality work
4.75	4	Q9. The homes in my area support the needs of the community
4.75	5	Q10. This place has a positive identity and I feel I belong
4.5	4.5	Q11. There is a range of spaces and opportunities to meet people
5.25	4.25	Q12. I feel safe here
4.75	5.25	Q13. Buildings and spaces are well cared for
4	2	Q14. I feel able to take part in decisions and help to change things for the better

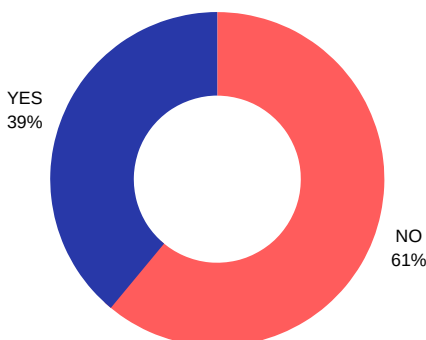
#### OPPORTUNITIES IN MY COMMUNITY

AVERAGE SCORE

1 = AWFUL 7 = EXCELLENT

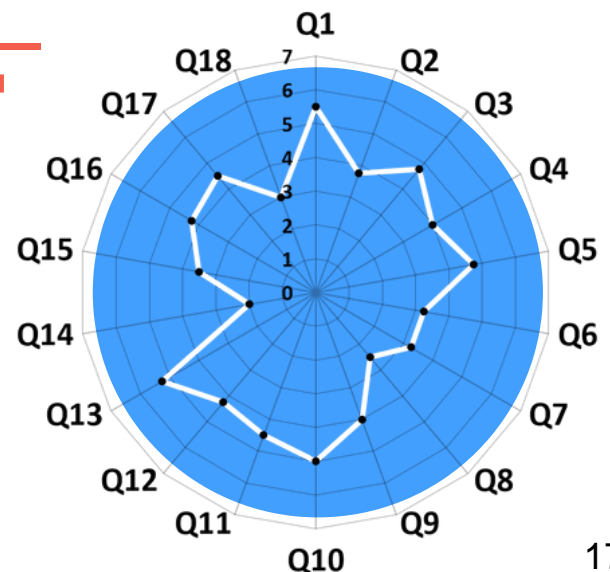
REGIONAL AVE	WARD AVE	QUESTION
3.75	3.5	Q15. Opportunities to meaningfully participate in local service planning and decision making
4.25	4.25	Q16. Opportunities to engage in both formal and informal learning that is relevant to you and your needs or interests
3.5	4.5	Q17. Opportunities for young people to develop innovative projects and businesses and work within their local area
3.75	3	Q18. Opportunities to engage in activities focussed on culture and the arts (performance, production, heritage)

### DO YOU INTEND TO STAY IN DUMFRIES AND GALLOWAY IN THE FUTURE?



### IF YOU DO NOT INTEND TO STAY IN D&G, WHY WOULD YOU LEAVE?

1. WORK
2. STUDY
3. TRAVEL



## TOP 5 ISSUES AFFECTING YOUNG PEOPLE IN THE WARD

1. ALCOHOL USE 2. BENEFITS & WELFARE 3. BULLYING 4. DRUG MISUSE 5. MENTAL HEALTH

## TOP 5 ISSUES YOUNG PEOPLE WOULD LIKE MORE INFORMATION ON

1. DIET & BODY IMAGE 2. CRIME & LAW 3. EMPLOYMENT 4. GAMBLING 5. SMOKING

### THE SURVEY QUESTIONS WERE DEVELOPED USING THE SCOTTISH GOVERNMENTS PLACE STANDARDS TOOL

#### WHERE YOU LIVE AND YOUR COMMUNITY

AVERAGE SCORE

1 = AWFUL 7 = EXCELLENT

REGIONAL AVE	WARD AVE	QUESTION
5.25	3.75	Q1. I can easily walk and cycle around using good routes
4.75	4	Q2. Public transport meets my needs
4.75	4.25	Q3. Traffic and parking allow people to move around safely and meet the community's needs
4.75	4.5	Q4. Buildings, streets and public spaces create an attractive place that is easy to get around
5.25	4.75	Q5. I can regularly experience good quality natural space
5	4.75	Q6. I can access a range of space with opportunities for play and recreation
4.25	3.75	Q7. Facilities and amenities meet my needs
4.25	3.5	Q8. There is an active local economy and the opportunity to access good-quality work
4.75	4.5	Q9. The homes in my area support the needs of the community
4.75	4.5	Q10. This place has a positive identity and I feel I belong
4.5	4	Q11. There is a range of spaces and opportunities to meet people
5.25	4.25	Q12. I feel safe here
4.75	4.75	Q13. Buildings and spaces are well cared for
4	3.75	Q14. I feel able to take part in decisions and help to change things for the better

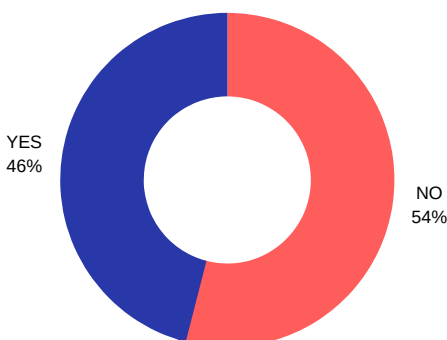
#### OPPORTUNITIES IN MY COMMUNITY

AVERAGE SCORE

1 = AWFUL 7 = EXCELLENT

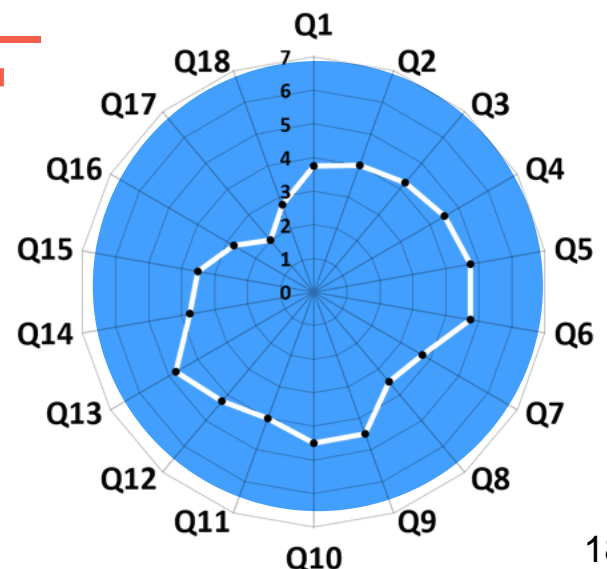
REGIONAL AVE	WARD AVE	QUESTION
3.75	3.5	Q15. Opportunities to meaningfully participate in local service planning and decision making
4.25	2.75	Q16. Opportunities to engage in both formal and informal learning that is relevant to you and your needs or interests
3.5	2	Q17. Opportunities for young people to develop innovative projects and businesses and work within their local area
3.75	2.75	Q18. Opportunities to engage in activities focussed on culture and the arts (performance, production, heritage)

### DO YOU INTEND TO STAY IN DUMFRIES AND GALLOWAY IN THE FUTURE?



### IF YOU DO NOT INTEND TO STAY IN D&G, WHY WOULD YOU LEAVE?

1. TRAVEL
2. STUDY
3. WORK



The results of our engagement with young people through 10,000 voices has been streamlined in order to provide a clear picture of the current needs and interests of young people across our region, focusing on the key issues in each ward area.

As part of Dumfries and Galloway's Year of Young People Legacy, the information collated within this report will be used to inform a five-year plan for our Council's Young People's Services and will be shared with Community Planning Partners across the region.

We hope, moving forward, that the data contained within the report provides a snapshot of local need and helps organisations build upon the invaluable services, opportunities and experiences we offer our young people.

We would like to thank all of the young people and organisations who participated in and supported 10,000 voices during 2018.



10,000

VOICES

**YOUTHWORK**

DUMFRIES & GALLOWAY

**FOR MORE INFORMATION CONTACT**

Young Peoples Services  
Oasis Youth Centre  
Newall Terrace  
Dumfries  
DG1 1LW

01387 260243  
[youth.work@dumgal.gov.uk](mailto:youth.work@dumgal.gov.uk)

**FEBRUARY 2019**